



vynckier

ENCLOSURE SYSTEMS INC.



RVJB Enclosures - NEMA 4X Rated Non-Metallic Enclosures

* Prefix

RVJB: Raised cover with bonded window

** Suffix

W: Stainless steel corner screws

HW: Stainless steel continuous hinge and stainless steel corner screws

HWPL: Stainless steel continuous hinge and stainless steel padlockable latch(es)

HWLL: Stainless steel continuous hinge and stainless steel hinge latch(es)

NHW: Non-metallic hinges and stainless steel corner screws

NHWPL: Non-metallic hinges and stainless steel padlockable latch(es)

NHWLL: Non-metallic hinges and stainless steel twist latch(es)

Features

- 6 available sizes from 8" x 6" to 18" x 16" (H x W).
- All RVJB enclosures were designed to meet the Joint Industrial Council (JIC) standards in the United States.
- Enclosures are maintenance free and corrosion resistant.
- Bases and opaque covers are made from hot compression molded halogen free, self extinguishing fiberglass reinforced polyester (FRP) that can withstand continuous temperatures from -58°F to 302°F (-50°C to 150°C) and momentary exposure to temperatures up to 392°F (200°C).
- Windows are made from 1/4" transparent Lexan polycarbonate.
- All enclosures can be easily modified to customer specifications.
- Gaskets are made from continuously poured polyurethane foam.
- Molded on mounting flanges increase strength.
- Corner ribs reinforce strength in the cover corners.

Applications

RVJB enclosures are designed for use as electrical junction boxes in highly corrosive environments and provide protection for equipment and operators from indirect electrical contact where visibility of internal components is necessary.

Standards

IEC 60529 (IP66)

IEC 60439-1

IEC 50298

EN 60529 (IP66)

EN 60439-1

EN 50298

Approvals

UL Listed Types:

3, 3R, 4, 4X, 12 & 13

CSA Listed Types:

3, 3R, 4, 4X, 12 & 13

AS Australian Standards 3131-1991

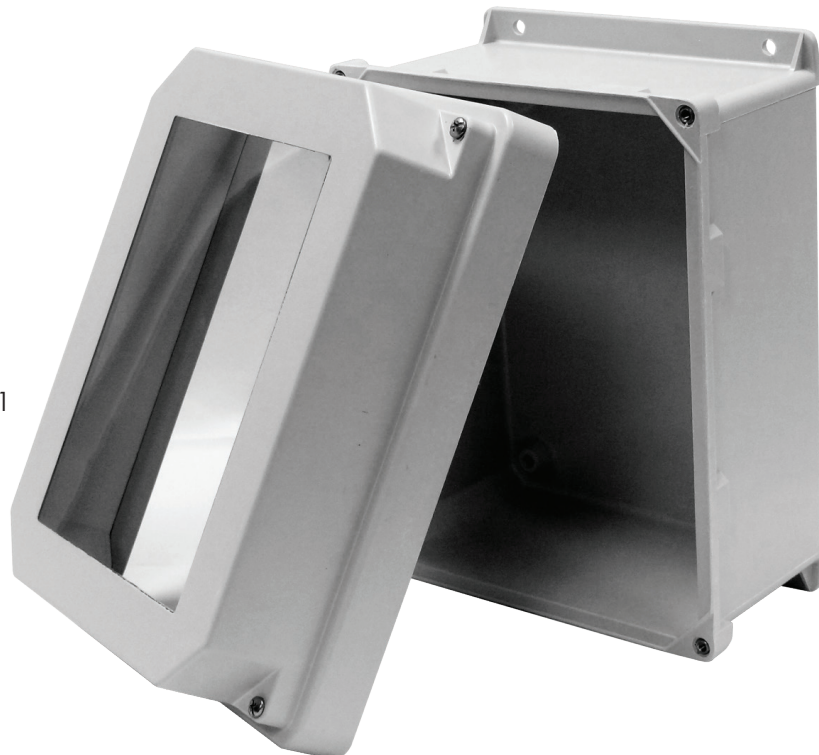
LLOYD'S Register of Shipping

KEMA

CEBEC

RoHS

CE



RVJB Series Data Sheet

Rev 01/12/16





RVJB Series Data Sheet

Rev 01/12/16



Part Number	Exterior Dimensions	Interior Dimensions	Weight	Back Plate	Front Plate
	H x W x D Inches (mm)	H x W x D Inches (mm)	Lbs (kg)	A: Aluminum S: Steel N: Non-Metallic	A: Aluminum
RVJB806W RVJB806HW RVJB806HWPL1 RVJB806HWLL1 RVJB806NHW RVJB806NHWPL1 RVJB806NHWLL1	9.32 x 7.32 x 6.32 (236 x 186 x 161)	8 x 6 x 6.04 (203 x 152 x 153)	3 (1.36)	MP806A MP806S MP806N	VFP806A VFPH806A VFPH806A-KIT
★ NEW					
RVJB1008W RVJB1008HW RVJB1008HWPL1 RVJB1008HWLL1 RVJB1008NHW RVJB1008NHWPL1 RVJB1008NHWLL1	11.31 x 9.31 x 6.99 (287 x 236 x 178)	10 x 8 x 6.66 (254 x 203 x 169)	4.9 (2.22)	MP1008A MP1008S MP1008N	VFP1008A VFPH1008A VFPH1008A-KIT
RVJB1210W RVJB1210HW RVJB1210HWPL2 RVJB1210HWLL2 RVJB1210NHW RVJB1210NHWPL2 RVJB1210NHWLL2	13.31 x 11.31 x 7.11 (338 x 287 x 181)	12 x 10 x 6.84 (305 x 254 x 174)	6.5 (2.95)	MP1210A MP1210S MP1210N	VFP1210A VFPH1210A VFPH1210A-KIT
RVJB1412W RVJB1412HW RVJB1412HWPL2 RVJB1412HWLL2 RVJB1412NHW RVJB1412NHWPL2 RVJB1412NHWLL2	15.31 x 13.31 x 8.26 (389 x 338 x 210)	14 x 12 x 7.95 (356 x 305 x 202)	8.8 (3.99)	MP1412A MP1412S MP1412N	VFP1412A VFPH1412A VFPH1412A-KIT
RVJB1614W RVJB1614HW RVJB1614HWPL2 RVJB1614HWLL2 RVJB1614NHW RVJB1614NHWPL2 RVJB1614NHWLL2	17.31 x 15.31 x 8.26 (440 x 389 x 209)	16 x 14 x 7.95 (406 x 356 x 202)	10.8 (4.90)	MP1614A MP1614S MP1614N	VFP1614A VFPH1614A VFPH1614A-KIT
RVJB1816W RVJB1816HW RVJB1816HWPL2 RVJB1816HWLL2 RVJB1816NHW RVJB1816NHWPL2 RVJB1816NHWLL2	19.31 x 17.31 x 11.08 (490 x 440 x 281)	18 x 16 x 10.83 (457 x 406 x 275)	14.3 (6.49)	MP1816A MP1816S MP1816N	VFP1816A VFPH1816A VFPH1816A-KIT
VJ2016W VJ2016HW VJ2016HWPL2 VJ2016HWLL2 VJ2016NHW VJ2016NHWPL2 VJ2016NHWLL2	21.32 x 17.32 x 11.51 (542 x 440 x 292)	19.84 x 15.84 x 11.05 (504 x 402 x 281)	19.75 (8.96)	MP2016A MP2016S MP2016N	VFP2016A VFPH2016A VFPH2016A-KIT

★ **NEW** standard depth VJ2016 has greater depth than that of raised depth versions of our competition