



# vynckier

## ENCLOSURE SYSTEMS INC.



### VJB Enclosures - NEMA 4X Rated Non-Metallic Enclosures

#### \* Prefix

**VJB:** Flat cover with bonded window

#### \*\* Suffix

**W:** Stainless steel corner screws

**HW:** Stainless steel continuous hinge and stainless steel corner screws

**HWPL:** Stainless steel continuous hinge and stainless steel padlockable latch(es)

**HWLL:** Stainless steel continuous hinge and stainless steel hinge latch(es)

**NHW:** Non-metallic hinges and stainless steel corner screws

**NHWPL:** Non-metallic hinges and stainless steel padlockable latch(es)

**NHWLL:** Non-metallic hinges and stainless steel twist latch(es)

#### Features

- 7 available sizes from 6" x 6" to 18" x 16" (H x W).
- All VJB enclosures were designed to meet the Joint Industrial Council (JIC) standards in the United States.
- Enclosures are maintenance free and corrosion resistant.
- Bases and opaque covers are made from hot compression molded halogen free, self extinguishing fiberglass reinforced polyester (FRP) that can withstand continuous temperatures from -58°F to 302°F (-50°C to 150°C) and momentary exposure to temperatures up to 392°F (200°C).
- Windows are made from 1/4" transparent Lexan polycarbonate.
- All enclosures can be easily modified to customer specifications.
- Gaskets are made from continuously poured polyurethane foam.
- Molded on mounting flanges increase strength.
- Corner ribs reinforce strength in the cover corners.

#### Applications

VJB enclosures are designed for use as electrical junction boxes in highly corrosive environments and provide protection for equipment and operators from indirect electrical contact where visibility of internal components is necessary.

#### Standards

IEC 60529 (IP66)

IEC 60439-1

IEC 50298

EN 60529 (IP66)

EN 60439-1

EN 50298

#### Approvals

UL Listed Types 3, 3R, 4, 4X, 12 & 13

CSA 3, 3R, 4, 4X, 12 & 13

AS Australian Standards 3131-1991

EExell, INTEX 84.102.378 U

LLOYD'S Register of Shipping

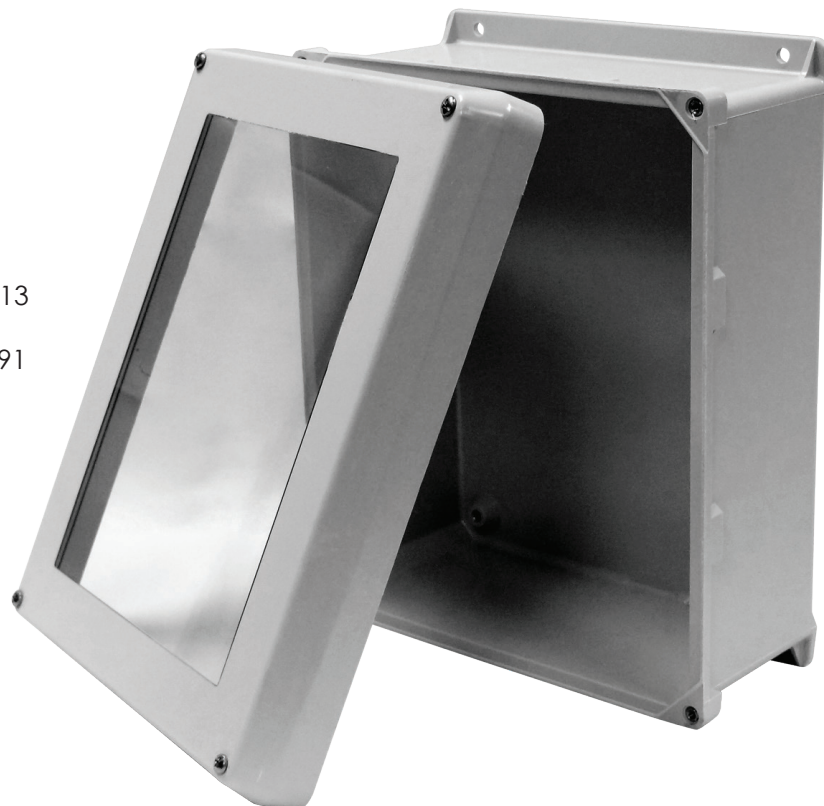
BASEEFA

KEMA

CEBEC

RoHS

CE



# VJB Series Data Sheet

Rev 01/12/16





# VJB Series Data Sheet

| Part Number   |  | Exterior Dimensions                       | Interior Dimensions                           | Weight         | Back Plate                                 | Front Plate                            |
|---|--|---|---|----------------|--|--|
|   |  | H x W x D Inches<br>(mm)                  | H x W x D Inches<br>(mm)                      | Lbs<br>(kg)    | A: Aluminum<br>S: Steel<br>N: Non-Metallic | A: Aluminum                            |
| VJB606W<br>VJB606HW<br>VJB606HWPL1<br>VJB606HWLL1     | VJB606NHW<br>VJB606NHWPL1<br>VJB606NHWLL1    | 7.31 x 7.31 x 4.92<br>(186 x 186 x 125)   | 6 x 6 x 4.64<br>(152 x 152 x 118)             | 2.8<br>(1.27)  | MP606A<br>MP606S<br>MP606N                 | VFP606A<br>VFPH606A<br>VFPH606A-KIT    |
| VJB806W<br>VJB806HW<br>VJB806HWPL1<br>VJB806HWLL1     | VJB806NHW<br>VJB806NHWPL1<br>VJB806NHWLL1    | 9.31 x 7.31 x 4.92<br>(236 x 186 x 125)   | 8 x 6 x 4.64<br>(203 x 152 x 118)             | 3.8<br>(1.72)  | MP806A<br>MP806S<br>MP806N                 | VFP806A<br>VFPH806A<br>VFPH806A-KIT    |
| VJB1008W<br>VJB1008HW<br>VJB1008HWPL1<br>VJB1008HWLL1 | VJB1008NHW<br>VJB1008NHWPL1<br>VJB1008NHWLL1 | 11.31 x 9.31 x 5.43<br>(287 x 236 x 138)  | 10 x 8 x 5.15<br>(254 x 203 x 131)            | 4.8<br>(2.18)  | MP1008A<br>MP1008S<br>MP1008N              | VFP1008A<br>VFPH1008A<br>VFPH1008A-KIT |
| VJB1210W<br>VJB1210HW<br>VJB1210HWPL2<br>VJB1210HWLL2 | VJB1210NHW<br>VJB1210NHWPL2<br>VJB1210NHWLL2 | 13.31 x 11.31 x 5.60<br>(338 x 287 x 142) | 12 x 10 x 5.27<br>(305 x 254 x 134)           | 6.3<br>(2.86)  | MP1210A<br>MP1210S<br>MP1210N              | VFP1210A<br>VFPH1210A<br>VFPH1210A-KIT |
| VJB1412W<br>VJB1412HW<br>VJB1412HWPL2<br>VJB1412HWLL2 | VJB1412NHW<br>VJB1412NHWPL2<br>VJB1412NHWLL2 | 15.31 x 13.31 x 6.60<br>(389 x 338 x 168) | 14 x 12 x 6.27<br>(356 x 305 x 159)           | 8.6<br>(3.90)  | MP1412A<br>MP1412S<br>MP1412N              | VFP1412A<br>VFPH1412A<br>VFPH1412A-KIT |
| VJB1614W<br>VJB1614HW<br>VJB1614HWPL2<br>VJB1614HWLL2 | VJB1614NHW<br>VJB1614NHWPL2<br>VJB1614NHWLL2 | 17.31 x 15.31 x 6.67<br>(440 x 389 x 169) | 16 x 14 x 6.41<br>(406 x 356 x 163)           | 10.6<br>(4.81) | MP1614A<br>MP1614S<br>MP1614N              | VFP1614A<br>VFPH1614A<br>VFPH1614A-KIT |
| VJB1816W<br>VJB1816HW<br>VJB1816HWPL2<br>VJB1816HWLL2 | VJB1816NHW<br>VJB1816NHWPL2<br>VJB1816NHWLL2 | 19.31 x 17.31 x 9.58<br>(490 x 440 x 243) | 18 x 16 x 9.33<br>(457 x 406 x 237)           | 14<br>(6.35)   | MP1816A<br>MP1816S<br>MP1816N              | VFP1816A<br>VFPH1816A<br>VFPH1816A-KIT |
| VJB2016W<br>VJB2016HW<br>VJB2016HWPL2<br>VJB2016HWLL2 | VJB2016NHW<br>VJB2016NHWPL2<br>VJB2016NHWLL2 | 21.5 x 17.32 x 11.58<br>(546 x 440 x 294) | 19.92 x 15.92 x<br>11.12<br>(506 x 404 x 282) | 16<br>(7.26)   | MP2016A<br>MP2016S<br>MP2016N              | VFP2016A<br>VFPH2016A<br>VFPH2016A-KIT |

**★ NEW**

